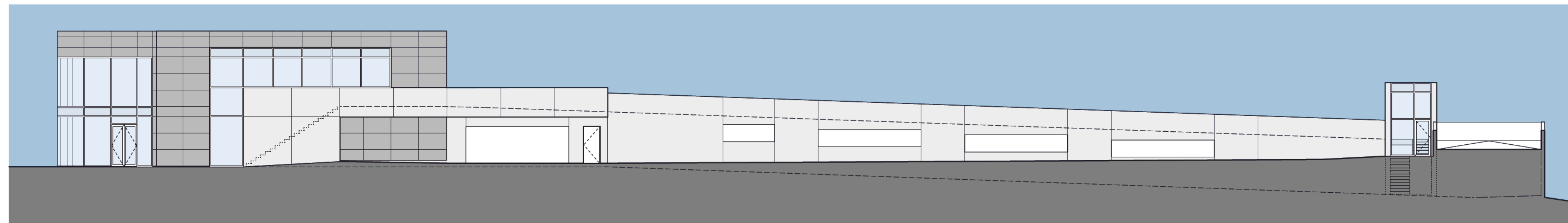
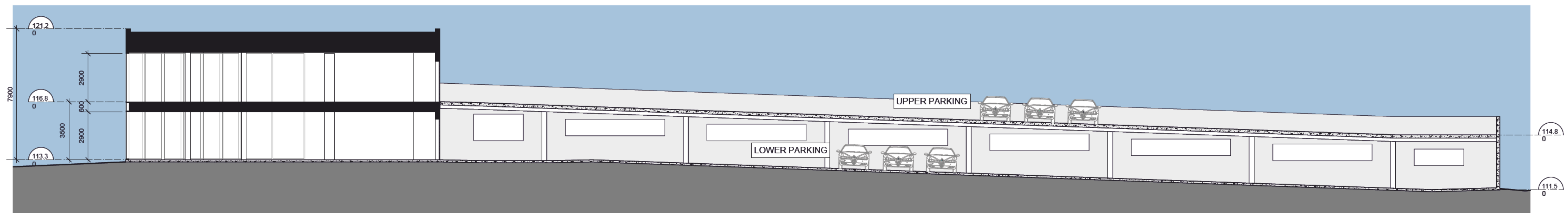


1 **Parkade / Building C East Elevation**  
scale: n.t.s.



2 **Building C / Parkade West Elevation**  
scale: n.t.s.



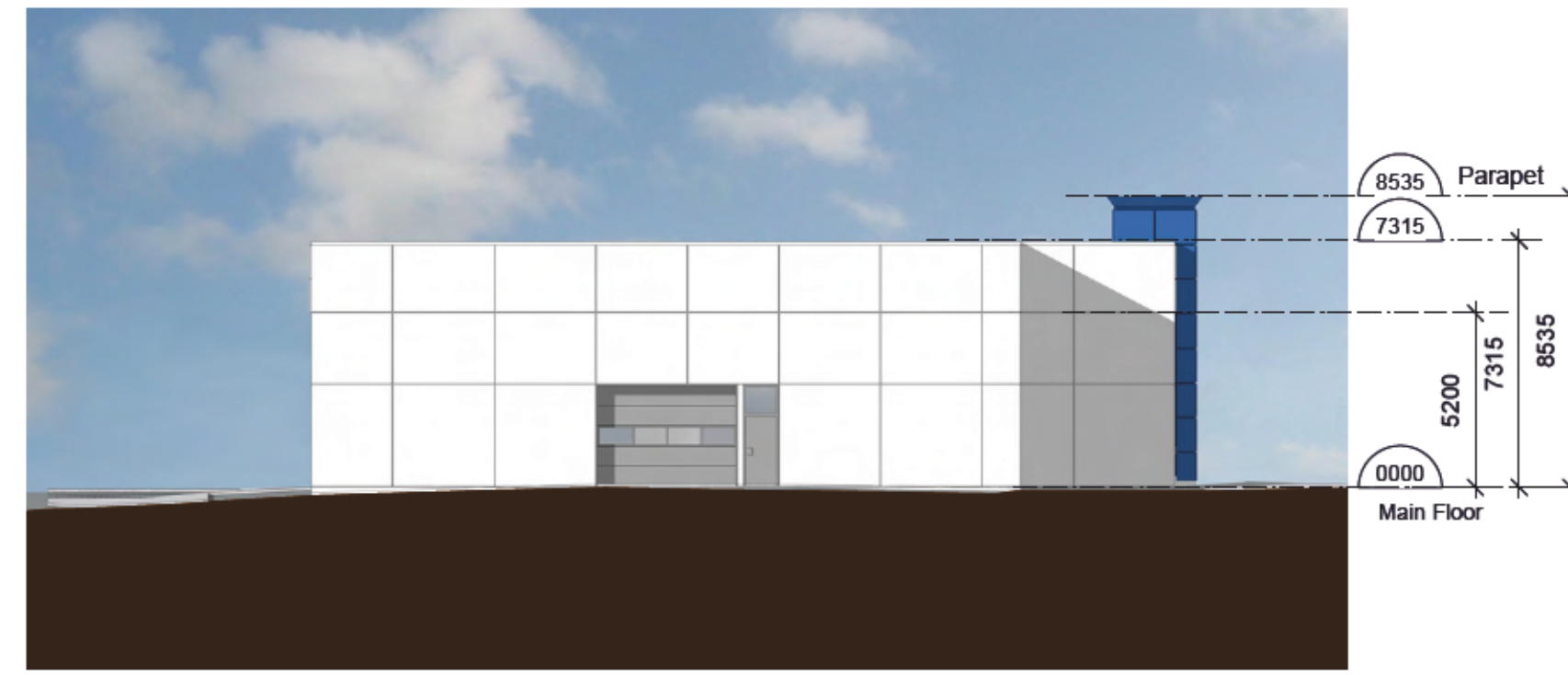
3 **North - South Building Section**  
scale: n.t.s.

RECEIVED  
RA 397  
2018-SEP-27  
Garrett Planning & Collaboration

This document has been digitally certified with digital certificate and encryption technology authorized by the Architectural Institute of BC and the Association of Professional Engineers of BC. The authoritative original has been transmitted to you in digital form. Any printed version can be relied upon as a true copy of the original when supplied by the architect, bearing images of the professional seal and digital certificate, or when printed from the digitally-certified electronic file provided by the architect.



4 East Elevation - Building B  
scale: N.T.S.



8 East Elevation - Building A  
scale: N.T.S.



3 North Elevation - Building B  
scale: N.T.S.



7 North Elevation - Building A  
scale: N.T.S.



2 South Elevation - Building B  
scale: N.T.S.



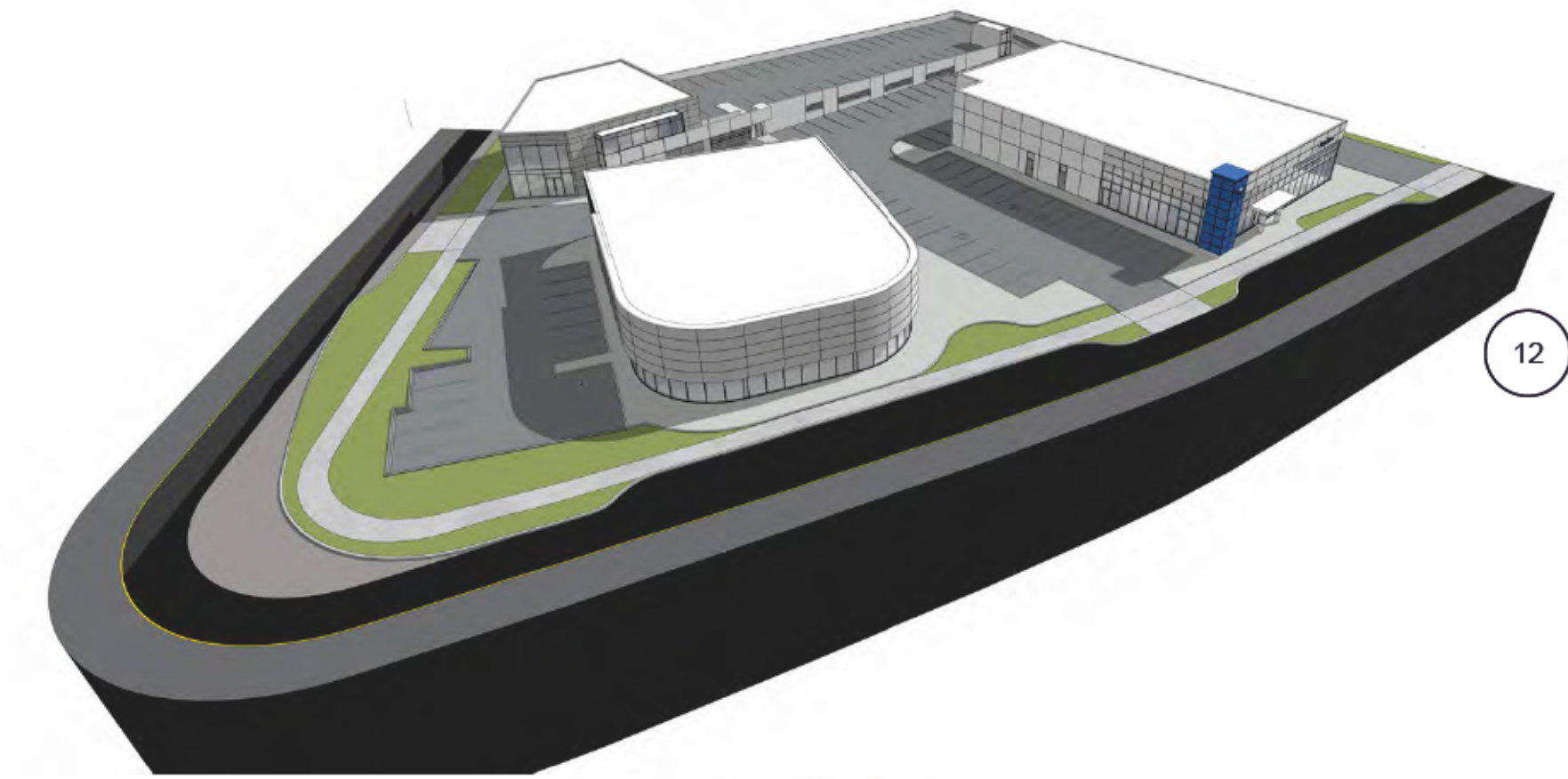
6 South Elevation - Building A  
scale: N.T.S.



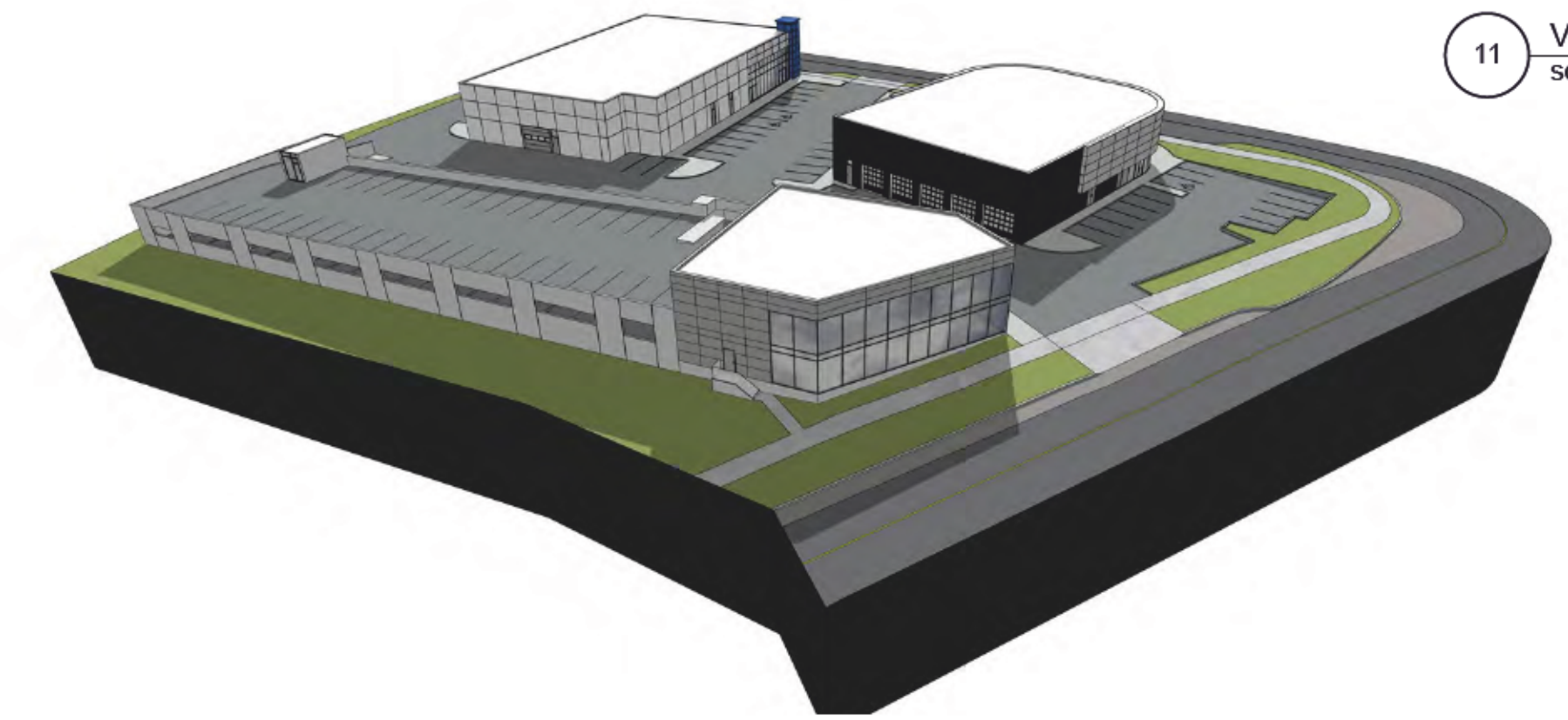
1 West Elevation - Building B  
scale: N.T.S.



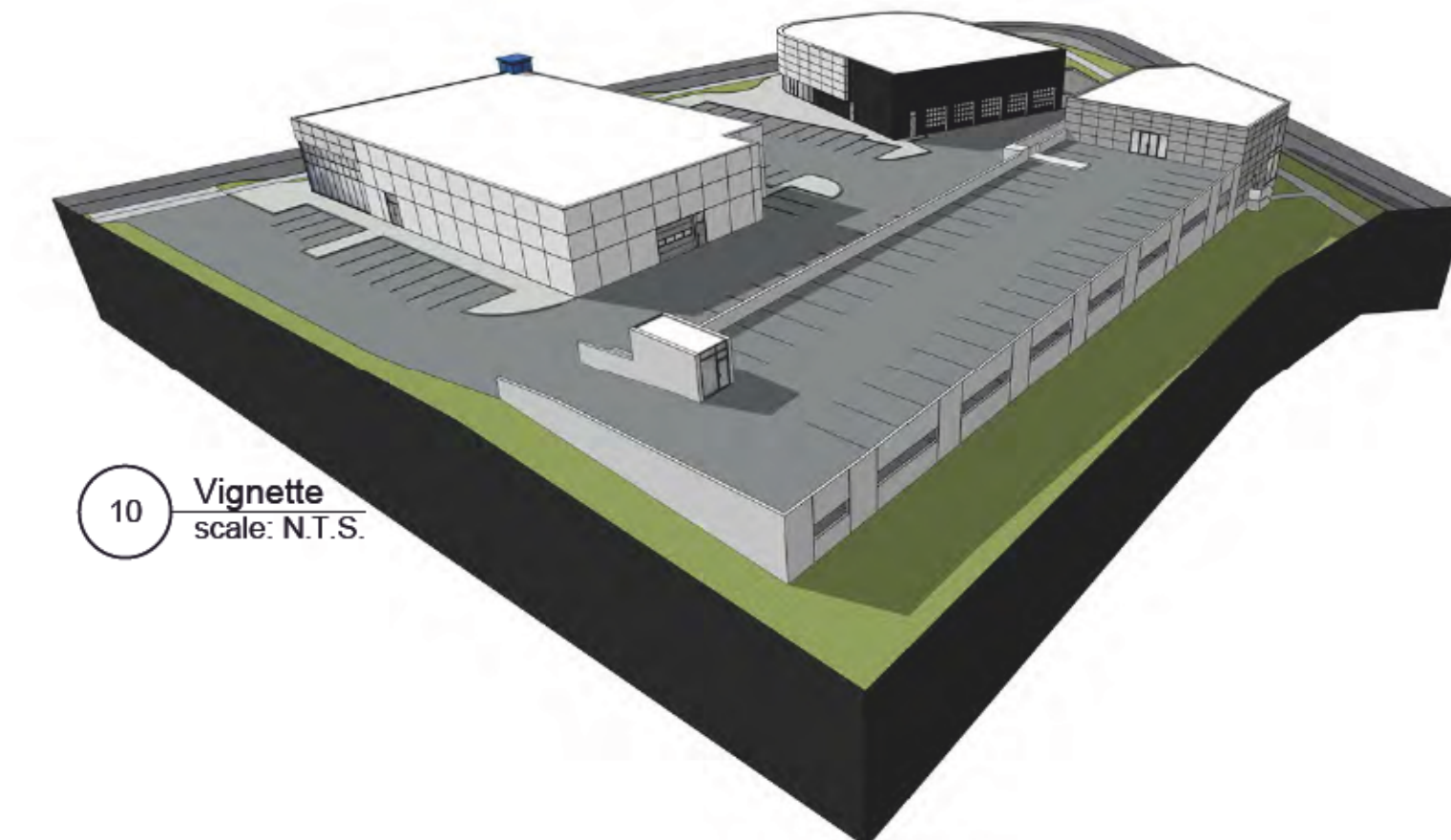
5 West Elevation - Building A  
scale: N.T.S.



12 Vignette  
scale: N.T.S.



11 Vignette  
scale: N.T.S.



10 Vignette  
scale: N.T.S.



9 Vignette  
scale: N.T.S.

RECEIVED  
RA 397  
2018-SEP-27  
James E. Irwin ARCHITECT INC.

This document has been digitally certified with digital certificate and encryption technology authorized by the Architectural Institute of BC and the Association of Professional Engineers of BC. The authoritative original has been transmitted to you in digital form. Any printed version can be relied upon as a true copy of the original when supplied by the architect, bearing images of the professional seal and digital certificate, or when printed from the digitally-certified electronic file provided by the architect.